



INLET FITTINGS FOR XPi PUMPS

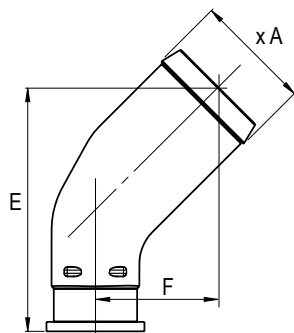
See recommendations of the hosing dimensions on page 42.

For high speeds, please consult.

All XPi pumps are supplied with their inlet fitting.

Please specify required fitting from the choice below when ordering.

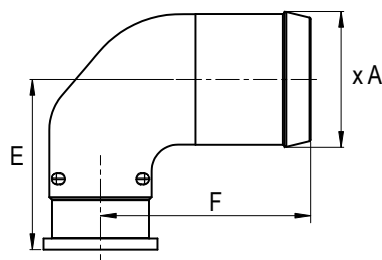
45° elbow fittings kit



Reference	Ø hose	Ø A	E	F
0519370	1 1/2"	39.1	91.7	46.7
0519373	42	43	91.7	46.7
0519374	1 3/4"	46	91.7	46.7
0519371	2"	51.8	108.4	54.4
0519372	2 1/2"	64.5	125.2	62.2

Dimensions in mm.

90° elbow fittings kit



Reference	Ø hose	Ø A	E	F
0521740	1 1/2"	39.1	58.6	79.5
0521741	2"	51.8	64.9	80.2
0521742	2 1/2"	64.5	71.3	87.5

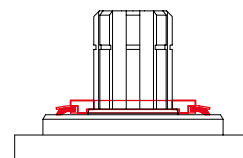
Dimensions in mm.

DEFLECTOR TO PROTECT SHAFT SEALS

This deflector ensures the protection of the pump shaft seals.

In particular, it protects the pump from projections of dirt from the road in cardan drive installations.

Reference: **DEF 054111**



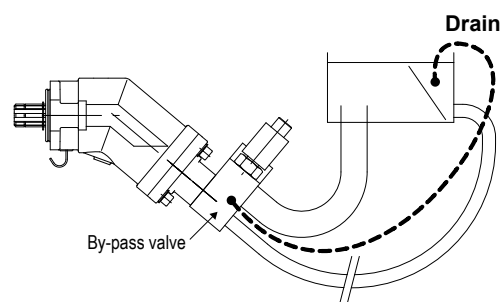
BY-PASS VALVE FOR XPi PUMPS

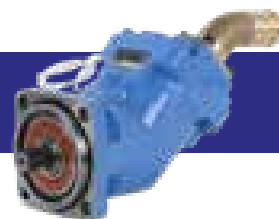
For XPi pump applications where the pump is driven by a continuous running PTO (PTO which cannot be disengaged), this solution allows the continuous running of the pump:

- without creating problems of fluid overheating;
- without affecting pump service life;
- with no modifications necessary to the hydraulic circuit of the equipment.

⇒ **By-pass fitted on the back of the XPi pump.**

LEDUC references	24 Volts
XPi 12 to XPi 63	BP63 0517931
XPi 80 to XPi 130	BP80 0522140





INLET FITTINGS FOR XAI PUMPS

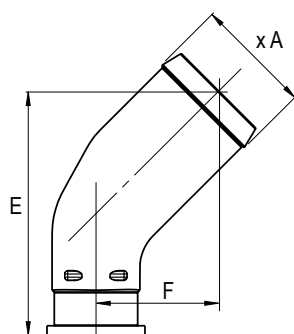
See recommendations of the hosing dimensions on page 42.

For high speeds, please consult.

All XAI pumps are supplied with their inlet fitting.

Please specify required fitting from the choice below when ordering.

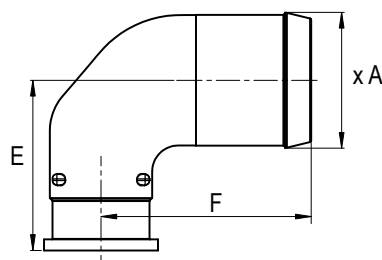
45° elbow fittings kit



Reference	Ø hose	Ø A	E	F
0519370	1 1/2"	39.1	91.7	46.7
0519373	42	43	91.7	46.7
0519374	1 3/4"	46	91.7	46.7
0519371	2"	51.8	108.4	54.4
0519372	2 1/2"	64.5	125.2	62.2

Dimensions in mm.

90° elbow fittings kit



Code LEDUC	Ø hose	Ø A	E	F
0521740	1 1/2"	39.1	58.6	79.5
0521741	2"	51.8	64.9	80.2
0521742	2 1/2"	64.5	71.3	87.5

Dimensions in mm.

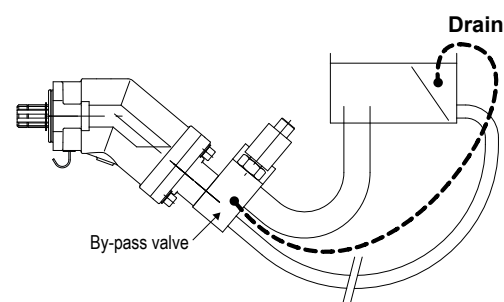
BY-PASS VALVE FOR XAI PUMPS

For XAI pump applications where the pump is driven by a continuous running PTO (PTO which cannot be disengaged), this solution allows the continuous running of the pump:

- without creating problems of fluid overheating;
- without affecting pump service life;
- with no modifications necessary to the hydraulic circuit of the equipment.

⇒ **By-pass fitted on the back of the XAI pump.**

Codes LEDUC	24 Volts
XAI 18 to XAI 32	BPA32 0521710
XAI 41 to XAI 63	BPA63 0521715

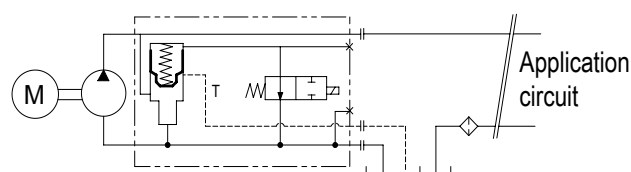


► How does it work ?

The by-pass valve is a 24 Volts solenoid valve.

When not activated, it enables pump output to link up to pump inlet.

When it is activated, the pump operates normally (output flow).



A drain line has to be installed between the By-Pass valve and the hydraulic tank of the vehicle to ensure sufficient oil circulation and a good cooling into the pump. In any case, the connection to the tank must be done below the oil level.

INLET FITTINGS FOR PA | PAC | PAD PUMPS



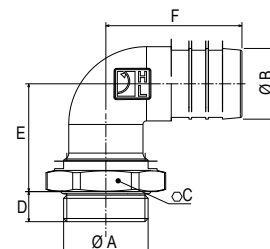
See recommendations of the hosing dimensions on page 42.

For high speeds, please consult.

90° elbow fittings, swivel

Reference	A	Ø B	C	D	E	F
240131	G 1 1/2"	40	60	17	61	77
240133	G 1 1/2"	50	60	17	65	82
240135	G 2"	50	70	17	65	82

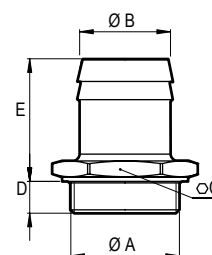
Dimensions in mm.



Straight fittings

Reference	A	Ø B	C	D	E
240182	G 1 1/2"	40	56	14	54
240067	G 1 1/2"	50	52	14	66
240066	G 1 1/2"	60	64	14	69
240186	G 1 1/2"	63.5	64	14	69
240183	G 2"	50	66	14	54
240170	G 2"	60	66	14	72
240201	G 1 1/2"	76.2	80	14	89

Dimensions in mm.

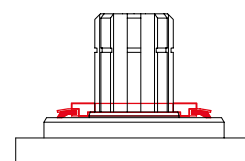


DEFLECTOR TO PROTECT SHAFT SEALS

This deflector ensures the protection of the pump shaft seals.

In particular, it protects the pump from projections of dirt from the road in cardan drive installations.

Reference: **DEF 054111**

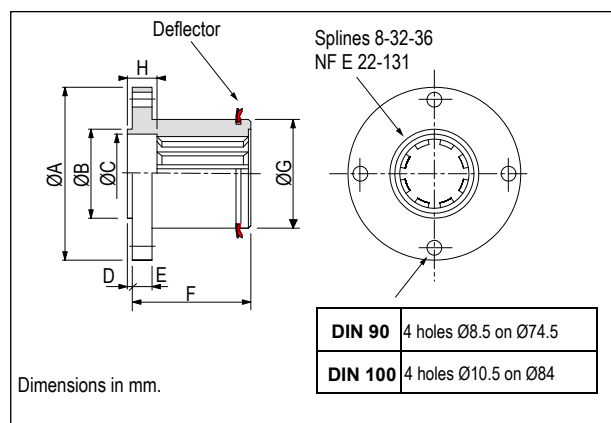


CARDAN PLATE- DIN 90 and DIN 100

The cardan plate enables the pump shaft to be connected to a cardan shaft with interface as on drawing on the right.

Note: the maximum admissible torque is limited by the drive shaft.

Type	LEDUC code	ØA	ØB	C	D	E	F	ØG	H
DIN 90	056315	90	47	43	2	10	62	55	15
DIN 100	0519040	100	57	43	2	10	64	55	15



INLET FITTINGS FOR TXV PUMPS (optional)

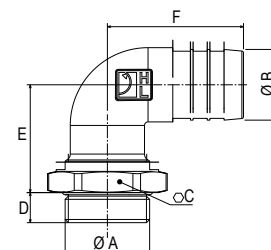


See recommendations of the hosing dimensions on page 42.

For high speeds, please consult.

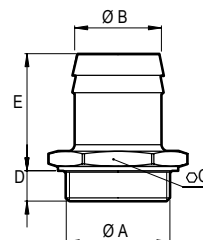
90° elbow fittings, swivel

Reference	A	Ø B	C	D	E	F	Pump type
240131	G 1 1/2"	40	60	17	61	77	TXV
240133	G 1 1/2"	50	60	17	65	82	TXV



Straight fittings

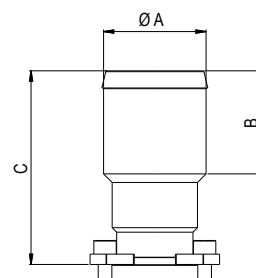
Reference	A	Ø B	C	D	E	Pump type
240182	G 1 1/2"	40	56	14	54	TXV
240067	G 1 1/2"	50	52	14	66	TXV
240066	G 1 1/2"	60	64	14	69	TXV
240186	G 1 1/2"	63.5	64	14	69	TXV
240201	G 1 1/2"	76.2	80	14	89	TXV



INLET FITTINGS KIT FOR TXV - *indexable* PUMPS

Straight fittings

Reference	Ø A	B	C	Pump type
0523921	50	50	72	TXV <i>indexable</i>
0523922	60	57	113	TXV <i>indexable</i>
0523924	76.2	74	138	TXV <i>indexable</i>



90° elbow fitting

Reference	Ø A	B	C	Pump type
0523919	50	66	82	TXV <i>indexable</i>
C001475	60	85	145	TXV <i>indexable</i>
C001476	63	85	145	TXV <i>indexable</i>

Dimensions in mm.

